



Lyng C of E Primary Academy

Summer Term 2 Newsletter



Willow Class

Year 1/2



Summer Term 2

Welcome back! We hope you all had a very restful half term and are returning ready for our final weeks of Year 1 and 2!

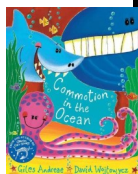
Crazy how fast time flies when you're having fun. Miss Allen is looking forward to our busiest but most exciting half term of them all. This time we will be learning all about our topic called, 'Commotion in the Ocean'. Here are some of the things we will be learning about and some exciting news about our next school trip...

English

Phonics: This half term sees the children taking part in the phonics screening check. We know the children will all do their best and that is all we can ask. After this we will be revisiting any sounds we are still unsure of from (RWI: Read, Write, Inc.) set 2 and 3 and having a further push on our blending skills and reading speed. The children will continue to receive weekly spellings and will be tested on these every Friday!



Writing & Key Texts: This half term, we will be reading poetry books such as, 'Commotion in the Ocean' by Giles Andreae to help us



write a senses seaside poem and a beautiful book called, 'Lost and Found' by Oliver Jeffers to help us write our own innovated version of the story.

Maths

We will continue to practice our number fluency through our Flashback 4 questions followed by a short weekly arithmetic quiz on a Friday. This half term we are focusing on fractions, telling the time to the nearest 5 minutes, looking at position and direction and consolidating our learning from the year in areas we found a bit tricky.

Don't forget to continue to use Doodle and Times Tables Rockstars!

Beside the Seaside

In Geography this half term we will be learning all about the seaside. We will be looking at where the seaside is, what features the seaside has and what people do on seaside holidays. We hope to finish this topic with an exciting trip to Wells Heritage Center and of course... a visit to the beach—wahoo!

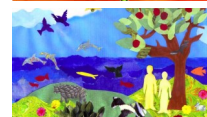
Common Plants

In science we are continuing our daily, class weather chart and seeing if we can spot any changes as we transition through spring and into summer but also starting our new topic about plants. We will be looking at the main parts of plants and trees, identifying some common garden and wild plants and finding out why plants are so important to us all!



Religious Education

This half term we will be answer the philosophical question: How did the universe come to be? To do this, we will be comparing the Christian and Hindu creation stories and then looking at how we can look after our environment.



Music

Music lessons will continue to be provided by the Norfolk Music Hub - they sound so much fun! This half term is called 'Mini-beasts'.

Physical Education

PE will continue to be held on Thursday and Friday! Please come to school in appropriate PE kit on these days.

Notes

Please continue to bring your child's bookbag (containing their reading folder), water bottle (with fresh WATER), a lunch box if required and a waterproof coat every day. If you have any questions please do not hesitate to contact the school office. Thank you ☺