



NEWSLETTER 1

September 2016



Back to School!

A new school year is now well underway! We hope you have enjoyed the summer holiday and the opportunity for family time together.

We have welcomed our new staff, Mr. Rafftree as Cherry class teacher, Miss Keen and Mrs Henley as Teaching Assistants who will be supporting in Rowan and Oak class. We also welcome our new families and children to Cherry class and Maddison to Rowan class. Everyone is settling in to their new classes and routines. It was wonderful to see so many smiles on the first day back to school!

This term, coach Mr Henery from Community Sports Foundation (CSF) is continuing to lead weekly **PE lessons** in Willow, Oak and Rowan.

Joining us this term is Mr Colfield who will be leading weekly **whole class music tuition**- Willow will be learning to play recorder, Rowan will be developing their ukulele skills and Oak will be learning to play clarinet.

Lorna Becker from Fledgling Music will be joining Cherry class this term for **weekly creative musical activities**.

Macmillan Coffee Morning

Friday 30 September

Join us once again and support this fundraising event!
All funds raised are given to Macmillan Cancer Care.

Once again we will be grouping the children according to their 'house' teams so that children from the same family will be in the hall together.

Swans, Herons and Kingfishers each have a time to attend.

Swans- 10.00 – 10.30, Herons 10-45- 11.15, Kingfishers 11.30-12.00

This system was really successful last year.

Please read and return your invitation slip when it arrives

If you (or a relative) are unable to join your child, he/she will still attend, and you can send your donation in a sealed envelope on the day marked 'Macmillan'.

Donations of cakes and biscuits to sell boost the funds we collect, as they always sell well! Offers of help to set up, run, and tidy up would also be greatly appreciated.



Harvest Festival

We will be celebrating at St Margaret's Church, Lyng

Friday 14 October at 9.45am

We do hope you will be able to join us.

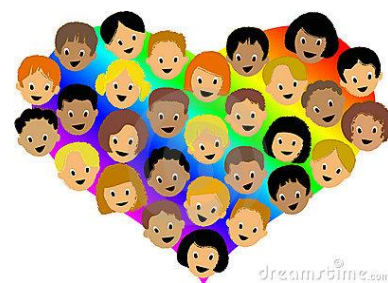
Children can bring their harvest gifts to school and we will take them to the church.



Attendance so far... in the first week of school, Cherry, Rowan and Oak classes achieved 100%, with 99.5% in Willow – That's amazing! Well Done Everyone!

Our Values

Each half term, the whole school focuses on learning about one of our Values – This term, we are learning about Generosity – starting from the message 'love your neighbour as yourself'. Children will learn about generosity as giving, encouraging others, offering help, sharing our time, taking care of God's creation for the future.



During Drop In, look out for the Values Tree in our classrooms.

Parking Safely and being considerate to other users: The start of the year is a good time to remind everyone that parking on the zig zag lines by the school gate is not permitted at any time. There should also be no parking within 10 metres of a junction .

Children and parents need to be able to access the school site safely. Please do not park on or obstruct pavements, or junctions.

Most of our neighbours are understanding of the fact that there is traffic at 'peak times'.

Please do not cause anxiety or upset by inconsiderate parking.

Parents are not permitted to drop off/ collect children or park in the school car park.



Class Presentation assemblies

Parents/ carers are invited to join us when children present an assembly, where they share their learning. These are held at the start of the school day in the hall. This is followed by our Celebration Assembly. Timings are approximate, but usually around 30 mins, starting at 9.05am

Cherry class- Friday 4 November

Oak class Friday 11 November

Willow class 25 November

Rowan class 2 December

Parents' Consultation evenings

Tuesday 1 November 4.50-6.30pm

Wednesday 2 November 3.30-5.00pm

Monday 7 November 4.20-6.00pm

Diary Dates:

21 September – School Photographs – individuals and family groups. Uniforms on please.

26 September – European Day of Languages – Each class will focus on learning about the language and culture of a country

27 September – Rowan Class visit 'Victorian School Day'

30 September– Macmillan Coffee Morning

14 October – Harvest Festival at St Margaret's church

17 October – Science week

9 November – Oak class visit 'World War II' day

14 November – Anti bullying week- 'Gripping Yarns' will be performing here on 14th and Play in a Day on 18th, with a range of class activities through the week .



School closes at 3.05pm on Friday 21 October and reopens at 8.55 am on Monday 31 October (Half term)

School closes at 3.05 pm on Friday 16 December and reopens at 8.55am on Thursday 5 January (Christmas holiday)

DROP IN FRIDAY

Starts Friday 16 September Finishes Friday 2 December

8.45-8.55am